

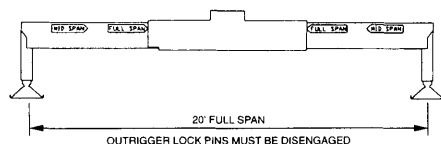


# National Series 1300

**NOTE:** All information in this catalog is preliminary, and is subject to change. Please contact the factory for final information.

## Full-Span Outrigger

**13105  
105' BOOM  
48' JIB**



**FULL-SPAN  
OUTRIGGER**

### 31 TO 105 FOOT BOOM RATED LOADS WITHOUT JIB

LOAD RADIUS (ft)	LOADED BOOM ANGLE	31 ft BOOM (lb)	LOADED BOOM ANGLE	45 ft BOOM (lb)	LOADED BOOM ANGLE	60 ft BOOM (lb)	LOADED BOOM ANGLE	75 ft BOOM (lb)	LOADED BOOM ANGLE	90 ft BOOM (lb)	LOADED BOOM ANGLE	105 ft BOOM (lb)
5	79.4	60,000										
8	73.1	38,400	79.3	30,000								
10	68.9	31,800	76.8	29,100								
12	64.6	27,300	74	24,800	78.8	22,300						
14	60.2	23,700	71.2	21,700	76.8	19,500	80	15,400				
16	55.6	21,000	68.4	19,200	74.8	17,300	78.5	15,000				
20	45.5	16,700	62.6	15,600	70.7	14,100	75.4	12,600	78.4	10,800	80.2	7,700
25	29.1	12,200	54.8	12,500	65.4	11,300	71.3	10,200	75.1	9,000	77.8	7,300
30			46.3	10,200	59.8	9,400	67.1	8,500	71.8	7,800	75	6,500
35			36.1	8,200	53.9	7,950	63.1	7,050	68.6	6,500	72.2	5,700
40			23.5	6,100	48	6,600	58.6	6,100	65	5,550	69.3	5,000
45					40.8	5,550	53.8	5,250	61.3	4,800	66.2	4,300
50					32.2	4,550	48.7	4,550	57.5	4,200	63.1	3,800
55					20.6	3,300	43	3,900	53.5	3,700	60	3,400
60							36.7	3,250	49.2	3,200	56.6	2,950
65							29.1	2,650	44.6	2,750	53.2	2,650
70							18.7	1,800	39.4	2,200	49.5	2,300
75									33.6	1,800	45.5	1,850
80									26.8	1,400	41.2	1,450
85									17.2	800	36.5	1,150
90											31.2	850
95											24.8	600
	0	5,200	0	2,400	0	900						

### 27 TO 48 FOOT JIB RATED LOADS

LOAD RADIUS (ft)	LOADED BOOM ANGLE	27 ft JIB (lb)	LOADED BOOM ANGLE	48 ft JIB (lb)
30	78.6	4,200		
35	76.5	3,800	78.8	2,400
40	74.4	3,400	77.1	2,250
45	72.1	2,900	75.4	2,150
50	69.8	2,500	73.6	2,000
55	67.4	2,100	71.7	1,800
60	65	1,800	69.7	1,650
65	62.5	1,500	67.7	1,450
70	60	1,300	65.6	1,300
75	57.4	1,100	63.4	1,100
80	54.7	900	61.2	900
85	51.8	700	59	800
90	48.8	500	56.7	700
95			54.2	550

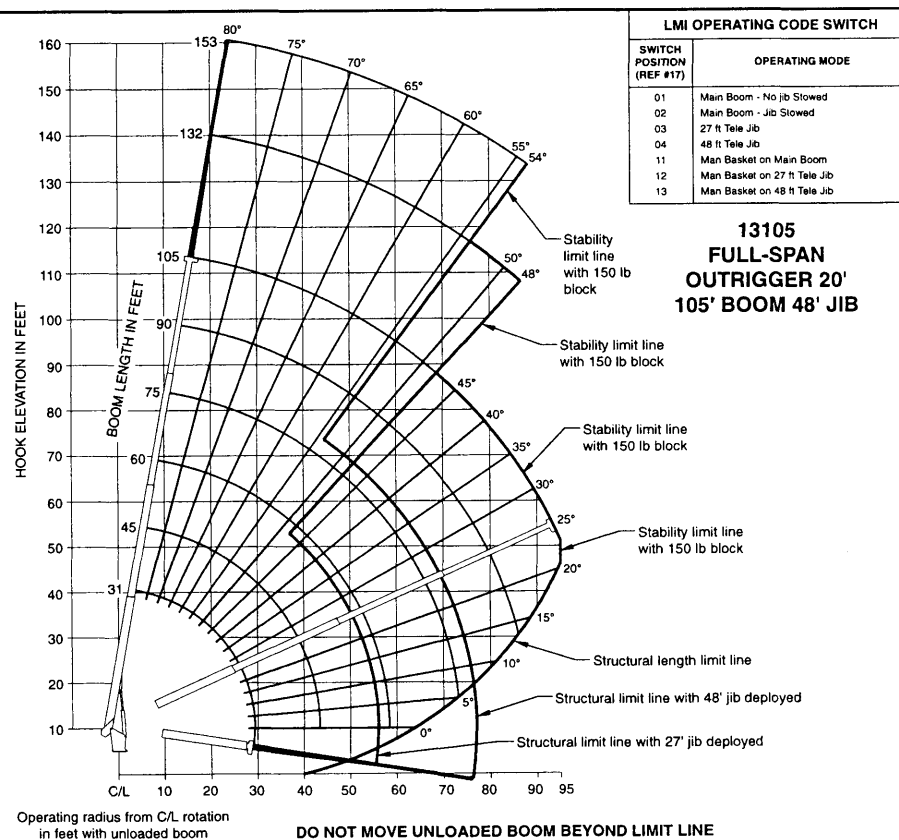
### RATED LOAD REDUCTIONS WITH JIB

BOOM LENGTH	48' JIB STOWED
31'	Reduce load 850 lb
45'	Reduce load 600 lb
60'	Reduce load 450 lb
75'	Reduce load 350 lb
90'	Reduce load 300 lb
105'	Reduce load 250 lb

#### Note:

- All capacities are in pounds, angles in degrees, radius in feet.
- Loaded boom angles are given as reference only.
- Shaded areas are structurally limited capacities.
- Handling of personnel is only permitted with full extension of all outrigger beams.

\* See owners manual. Also the 60,000 lb load requires optional 9/16" diameter 6x25 IWRC cable.



LMI OPERATING CODE SWITCH	
SWITCH POSITION (REF #17)	OPERATING MODE
01	Main Boom - No jib Slowed
02	Main Boom - Jib Slowed
03	27 ft Tele Jib
04	48 ft Tele Jib
11	Man Basket on Main Boom
12	Man Basket on 27 ft Tele Jib
13	Man Basket on 48 ft Tele Jib

**13105  
FULL-SPAN  
OUTRIGGER 20'  
105' BOOM 48' JIB**

#### SET-UP

- Fully extend and set outriggers to full-span location, level crane and set front stabilizer if equipped.

#### OPERATION

- The 31 ft. boom length capacities are based on boom fully retracted. If not fully retracted, do not exceed 45 ft. boom length capacities.
- Do not extend unloaded boom or jib beyond stability limit line on range chart as loss of stability may occur.
- Load blocks and slings are considered to be a part of the load.
- Operate with jib by radius when main boom is fully extended and by boom angle when main boom is partially extended. Do not exceed jib capacities at any partially extended boom length.
- All jib loads must be lifted with single part reeving.

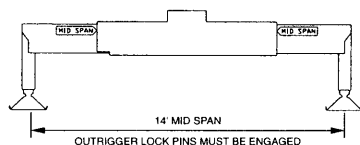


# National Series 1300

**NOTE: All information in this catalog is preliminary, and is subject to change. Please contact the factory for final information.**

## Mid-Span Outrigger

**13105  
105' BOOM  
48' JIB**



**MID-SPAN  
OUTRIGGER**

### 31 TO 105 FOOT BOOM RATED LOADS WITHOUT JIB

LOAD RADIUS (ft)	LOADED BOOM ANGLE	31 ft BOOM (lb)	LOADED BOOM ANGLE	45 ft BOOM (lb)	LOADED BOOM ANGLE	60 ft BOOM (lb)	LOADED BOOM ANGLE	75 ft BOOM (lb)	LOADED BOOM ANGLE	90 ft BOOM (lb)	LOADED BOOM ANGLE	105 ft BOOM (lb)
5	79.4	60,000										
8	73.1	38,400	79.3	30,000								
10	68.9	31,800	76.8	29,100								
12	64.6	27,300	74	24,800	78.8	22,300						
14	60.2	23,700	71.2	21,700	76.8	19,500	80	15,400				
16	55.5	19,500	68.4	19,200	74.8	17,300	78.5	15,000				
20	45.3	12,200	62.4	12,800	70.6	13,200	75.4	12,600	78.4	10,800	80.2	7,700
25	29.1	7,700	54.6	8,300	65.1	8,600	71	8,800	75.1	8,000	77.8	7,300
30			46.6	5,700	59.8	6,000	67	6,200	71.7	6,400	75	6,500
35			36.5	4,000	53.8	4,200	62.5	4,400	68	4,600	71.8	4,700
40			23	2,800	47.4	3,100	57.9	3,200	64.3	3,300	68.6	3,400
45					40.1	2,200	53	2,300	60.5	2,400	65.4	2,500
50					31.5	1,500	47.8	1,600	56.5	1,700	62.2	1,800
55					19.9	950	42.1	1,050	52.4	1,150	58.8	1,200
60							35.8	650	48.1	700	55.4	750
65												
70												
75												
80												
85												
90												
95												
0		5,200	0	2,200	0	650						

### 27 TO 48 FOOT JIB RATED LOADS

LOAD RADIUS (ft)	LOADED BOOM ANGLE	27 ft JIB (lb)	LOADED BOOM ANGLE	48 ft JIB (lb)
30	78.6	4,200		
35	76.5	3,800	78.8	2,400
40	74.4	3,400	77.1	2,250
45	71.8	2,400	75.4	2,150
50	69.1	1,600	73.6	2,000
55	66.5	1,000	71.6	1,750
60	63.9	500	69.1	1,200
65			66.6	750
70				
75				
80				
85				
90				
95				

### RATED LOAD REDUCTIONS WITH JIB

BOOM LENGTH	48' JIB STOWED
31'	Reduce load 850 lb
45'	Reduce load 600 lb
60'	Reduce load 450 lb
75'	Reduce load 350 lb
90'	Reduce load 300 lb
105'	Reduce load 250 lb

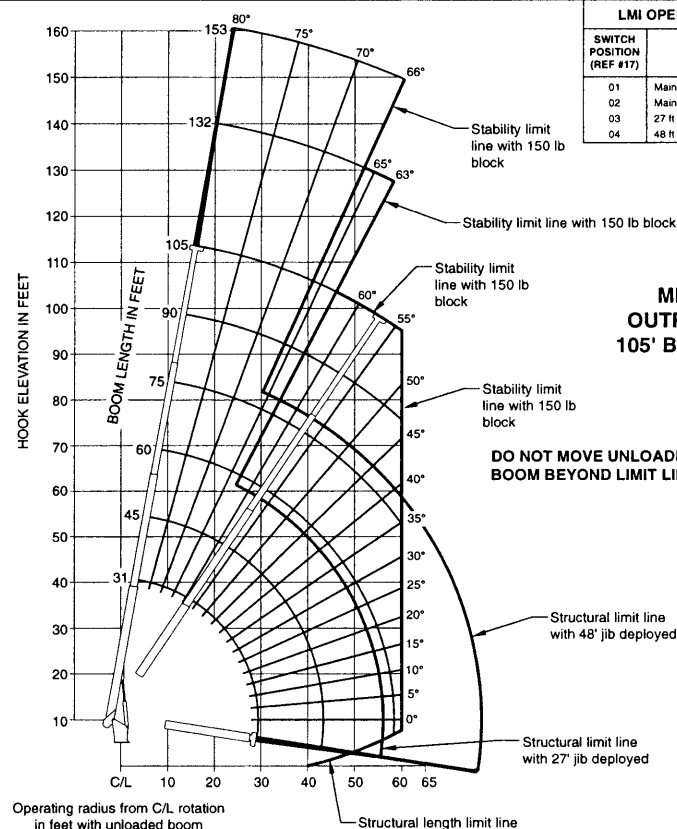
#### Note:

- All capacities are in pounds, angles in degrees, radius in feet.
- Loaded boom angles are given as reference only.
- Shaded areas are structurally limited capacities.
- Handling of personnel is only permitted with full extension of all outrigger beams.

\* See owners manual. Also the 60,000 lb load requires optional 9/16" diameter 6x25 IWRC cable.

### LMI OPERATING CODE SWITCH

SWITCH POSITION (REF #17)	OPERATING MODE
01	Main Boom - No jib Stowed
02	Main Boom - Jib Stowed
03	27 ft Tele Jib
04	48 ft Tele Jib



**13105  
MID-SPAN  
OUTRIGGER 14'  
105' BOOM 48' JIB**

#### SET-UP

- Engage mid-span outriggers lock pins, extend and set outriggers to mid-span location, level crane and set front stabilizer if equipped.

#### OPERATION

- The 31 ft. boom length capacities are based on boom fully retracted. If not fully retracted, do not exceed 45 ft. boom length capacities.
- Do not extend unloaded boom or jib beyond stability limit line on range chart as loss of stability may occur.
- Load blocks and slings are considered to be a part of the load.
- Operate with jib by radius when main boom is fully extended and by boom angle when main boom is partially extended. Do not exceed jib capacities at any partially extended boom length.
- All jib loads must be lifted with single part reeving.